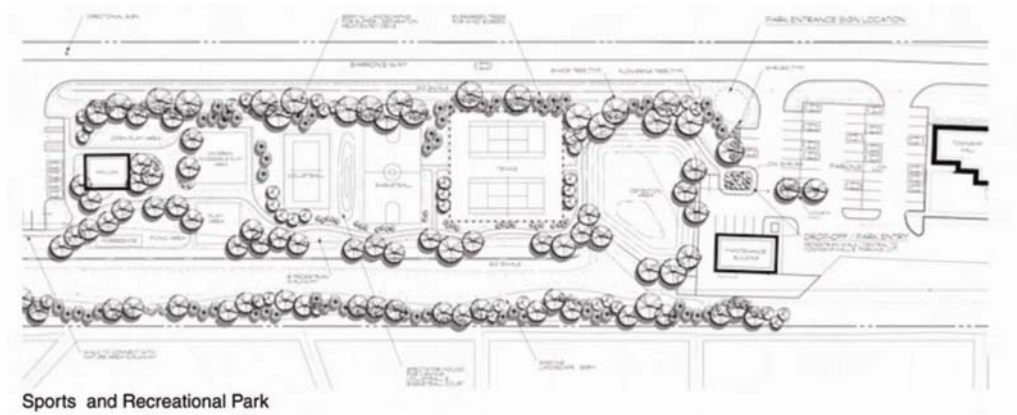


Monroe Township Park

Monroe Township, Michigan



OWNER / CLIENT

Monroe Charter Township

PROJECT START - END

May 2002 - June 2004

PROJECT NO.

315091

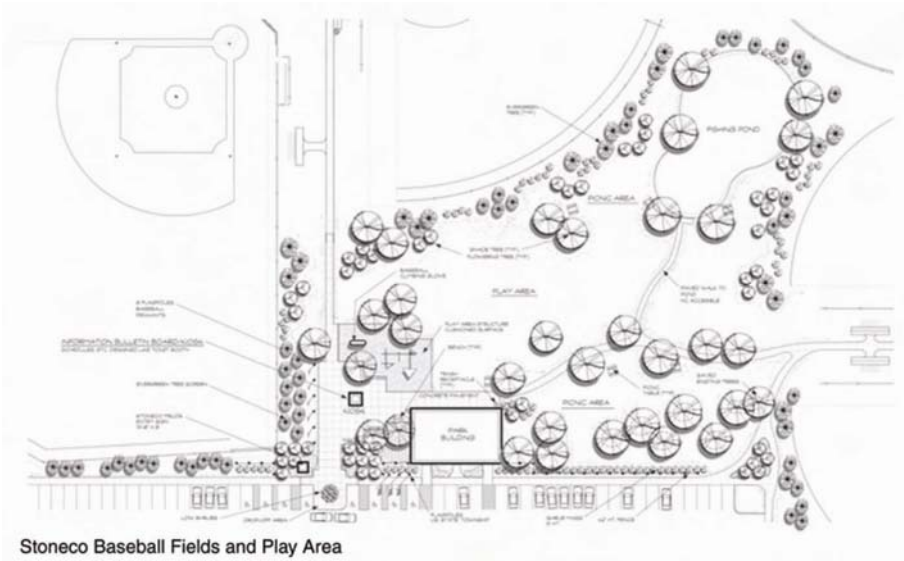
Monroe Township's centrally located 45-acre Multi-Use Recreational Park was developed on properties adjoining the Township Hall. With open spaces and wooded areas, this multi-use park also gives residents a facility where they can enjoy a variety of recreational opportunities at one site without having to drive from location to location throughout the Community.

This park includes the following amenities:

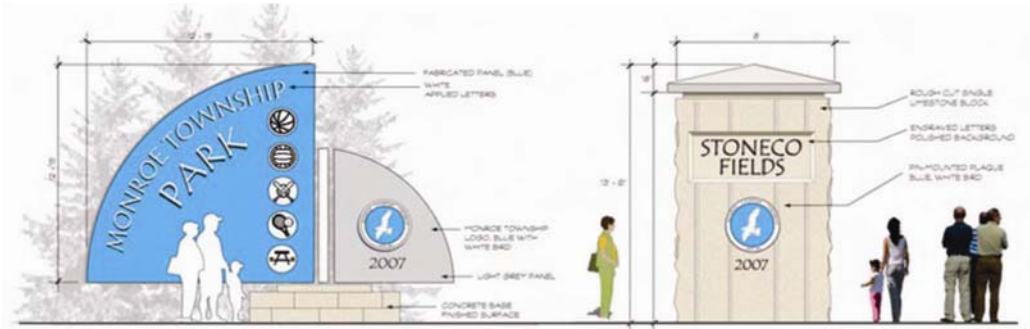
- Barrier-Free Walking/Nature Trail Through a Wooded Natural Area with Wildlife Shelters and Bird-Watching Areas
- An Educationally-Based Nature Center
- A Universally Accessible Playscape Area
- A Handicap Accessible Playground Area
- 12 Baseball Fields, Tennis Courts, Basketball Courts, Volleyball Courts
- Two Sheltered Pavilions With Barrier-Free Restroom Facilities
- A Fishing Pond and Handicap Accessible Fishing Dock
- Stormwater Pond With Bio-Swales and Native Plantings

Dietrich, Bailey and Associates, PC (DBA) is a wholly-owned subsidiary of Spalding DeDecker Associates, Inc. (SDA). DBA's Scope of Work included:

- Recreation Plan for MDNR Grant Application
- Concept Plans
- Boundary Surveys
- Topographical Survey
- Engineering Plans and Contract Documents
- Construction Staking
- Construction Administration
- Construction Observation



Stoneco Baseball Fields and Play Area



Monroe Township Recreational Park Signage